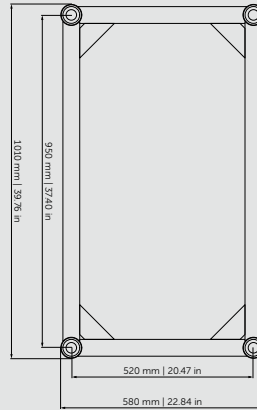


## SPECIFICATIONS

Tubes	60 x 6 mm (2.36 x 0.24 in)
Braces	30 x 3 mm (1.18 x 0.12 in)
Alloy	EN AW-6082 T6



## LOADING TABLES

		8 m	10 m	12 m	14 m	16 m	18 m	20 m	22 m	24 m
UDL [kg/m]		1441.6	1148.7	835.7	607.9	460	358.7	286.2	232.5	191.7
Deflection [mm]		11.9	23.3	35.4	48.3	63.1	80	98.9	119.9	142.9
CPL [kg]		5880*	5157*	4513*	4000*	3570*	3196*	2861.7	2557.8	2300.7
Deflection [mm]		9.8	16.9	25.8	36.8	49.7	64.4	80.7	98.3	117.7
TPL [kg]		3608	3276	2933	2681	2429	2227	2039	1880	1725.5
Deflection [mm]		10.2	18.2	28.4	41.7	57.1	75.5	96.3	120.1	145.7
QPL [kg]		2673	2457	2256	2085	1840.2	1614	1430.9	1278.9	1150.3
Deflection [mm]		10.5	19	30.4	45.1	60.1	76.2	94.3	114.5	136.6
FPL [kg]		2134	1997	1859	1738	1533.5	1345	1192.4	1065.7	958.6
Deflection		10.7	19.7	31.9	47.7	63.6	80.6	99.6	120.7	143.9
		26.25 ft	32.81 ft	39.37 ft	45.93 ft	52.49 ft	59.06 ft	65.62 ft	72.18 ft	78.74 ft
UDL [lbs/ft]		968.71	771.89	561.56	408.49	309.11	241.04	192.32	156.23	128.82
Deflection [in]		0.47	0.92	1.39	1.90	2.48	3.15	3.89	4.72	5.63
CPL [lbs]		12963.18	11369.24	9949.46	8818.49	7870.50	7045.97	6308.97	5638.98	5072.18
Deflection [in]		0.39	0.67	1.02	1.45	1.96	2.54	3.18	3.87	4.63
TPL [lbs]		7954.28	7222.34	6466.16	5910.59	5355.03	4909.69	4495.23	4144.69	3804.08
Deflection [in]		0.40	0.72	1.12	1.64	2.25	2.97	3.79	4.73	5.74
QPL [lbs]		5892.96	5416.76	4973.63	4596.64	4056.95	3558.26	3154.59	2819.49	2535.98
Deflection [in]		0.41	0.75	1.20	1.78	2.37	3.00	3.71	4.51	5.38
FPL [lbs]		4704.66	4402.63	4098.39	3831.63	3380.79	2965.22	2628.79	2349.47	2113.35
Deflection [in]		0.42	0.78	1.26	1.88	2.50	3.17	3.92	4.75	5.67

Loading tables are valid for static loads and spans with two supporting points. Spans must be supported at each end. Contact structural engineer if there are more supporting points applied or dynamic and wind loads involved.

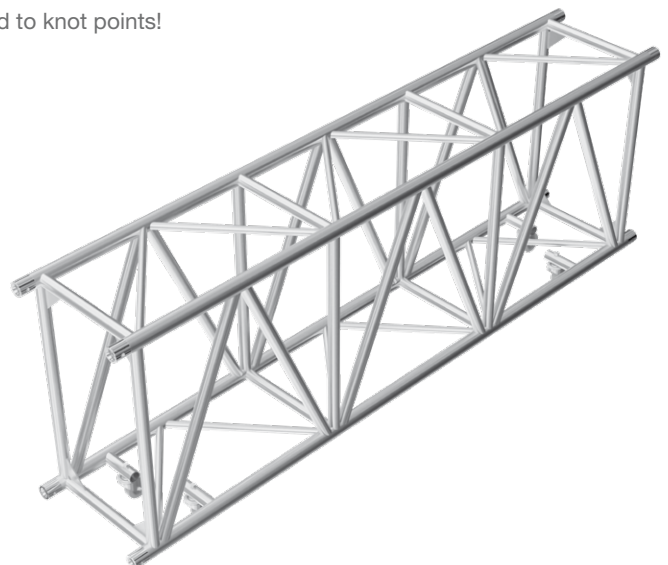
High values of distributed loads are idealized. Loads must be applied to knot points!

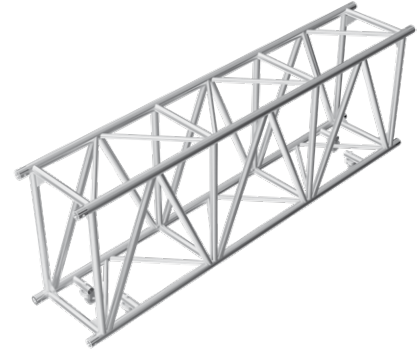
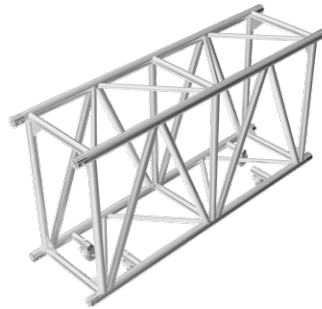
\* limited by interaction of shear and movement at the connection

Displacement connection is decisive!

## STRAIGHT SEGMENT LENGTHS

Code	Length		Weight	
TT104M-100	1 m	3.28 ft	27.04 kg	59.61 lbs
TT104M-200	2 m	6.56 ft	46.13 kg	101.69 lbs
TT104M-300	3 m	9.84 ft	65.21 kg	143.76 lbs





**TT104M-100**

Straight segment  
 1 m (3.28 ft)  
 27.04 kg (59.61 lbs)

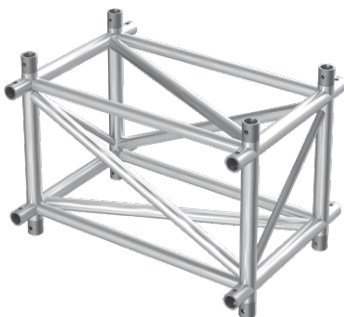
**TT104M-200**

Straight segment  
 2 m (6.56 ft)  
 46.13 kg (101.69 lbs)

**TT104M-300**

Straight segment  
 3 m (9.84 ft)  
 65.21 kg (143.76 lbs)

26 m	28 m	30 m	32 m	34 m	36 m	38 m	40 m	42 m
160	134.8	114.4	97.8	84	72.5	62.7	54.3	47.2
168.1	195.3	224.8	256.4	290.2	326.3	364.6	405.3	448.3
2079.6	1886.8	1716.7	1564.9	1428.4	1304.4	1191.1	1086.8	990.3
139.1	162.5	188	215.7	245.7	278	312.8	350.1	390.1
1559.7	1415.1	1287.5	1173.7	1071.3	978.3	893.3	815.1	742.7
171.3	199	228.9	260.9	295.2	331.6	370.4	411.4	454.7
1039	943.4	858.3	782.5	714.2	652.2	595.5	543.4	495.1
160.8	187.1	215.6	246.2	279.1	314.2	351.6	391.5	433.7
866.5	786.2	715.3	652.1	595.2	543.5	496.3	452.8	412.6
169.2	196.7	226.2	258	292	328.2	366.7	407.5	450.6
85.3 ft	91.86 ft	98.43 ft	104.99 ft	111.55 ft	118.11 ft	124.67 ft	131.23 ft	137.80 ft
107.52	90.58	76.87	65.72	56.45	48.72	42.13	36.49	31.72
6.62	7.69	8.85	10.09	11.43	12.85	14.35	15.96	17.65
4584.73	4159.68	3784.68	3450.01	3149.08	2875.71	2625.93	2395.98	2183.24
5.48	6.40	7.40	8.49	9.67	10.94	12.31	13.78	15.36
3438.55	3119.76	2838.45	2587.57	2361.81	2156.78	1969.39	1796.99	1637.37
6.74	7.83	9.01	10.27	11.62	13.06	14.58	16.20	17.90
2290.60	2079.84	1892.23	1725.12	1574.54	1437.85	1312.85	1197.99	1091.51
6.33	7.37	8.49	9.69	10.99	12.37	13.84	15.41	17.07
1910.31	1733.27	1576.97	1437.63	1312.19	1198.21	1094.15	998.25	909.63
6.66	7.74	8.91	10.16	11.50	12.92	14.44	16.04	17.74



**TT104M-C41**

Four-way corner  
 0.52 x 0.52 x 1.01 m  
 (1.71 x 1.71 x 3.31 ft)  
 28.25 kg (62.27 lbs)