

TOWER 1



TOWER 1

Tower 1 is made from Quicklock truss segments. It can go up to 7.5 m (24.6 ft) high and features a maximum loading capacity of 1000 kg (2,205 lbs). This tower system can be used for a wide range of roof designs or as support for larger LED screens support. It can be equipped with a hand winch, manual chain hoist, or rigging motor.

PART LIST

T1T-BP	1 pc
T1T-SBT44-2W	1 pc
T1T-HS	4 pcs
T1T-TS-650+EB	1 pc
T1T-LO	4 pcs
TT34-50	1 pc
TT34-200	2 pcs
TT34-300	1 pc
T1T-SH-700	1 pc
T1T-CH1	1 pc

SPECIFICATIONS

SELF WEIGHT	190 kg (419 lbs)
HEIGHT	7.5 m (24.6 ft)
LOAD CAPACITY	1000 kg (2,205 lbs)

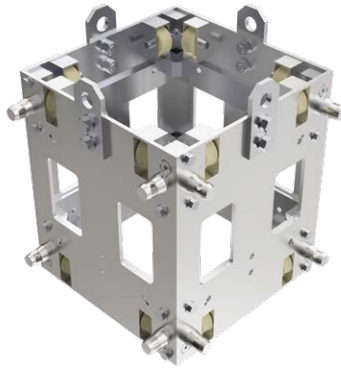
TT34 MAST SECTION

MAIN TUBES	50 x 4 mm (1.97 x 0.16 in)
BRACES	20 x 2 mm (0.79 x 0.08 in)
ALLOY	EN AW-6082 T6



T1T-BP

Steel base plate
680 x 680 x 340 mm
(26.77 x 26.77 x 13.39 in)
33.42 kg (73.68 lbs)



T1T-SBT44-2W

Sleeve block
467 x 530 x 467 mm
(18.39 x 20.87 x 18.39 in)
49.41 kg (109.93 lbs)



T1T-TS-650+EB

Top section
650 x 260 x 290 mm
(25.59 x 10.24 x 11.42 in)
12.88 kg (28.4 lbs)



T1T-LO

Long outrigger
1520 x 110 x 340 mm
(595.84 x 4.33 x 13.39 in)
10.92 kg (24.06 lbs)



T1T-HS

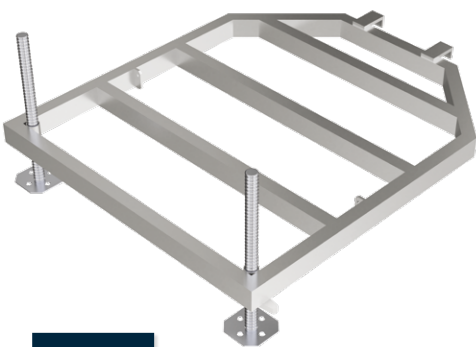
Hinge section
49 x 166 x 66 mm
(1.93 x 6.54 x 2.60 in)
0.61 kg (1.33 lbs)



T1T-SH-700

Safety hooks - 700 mm,
hook + hook
750 x 60 x 75 mm
(29.53 x 2.36 x 2.95 in)
1.15 kg (2.54 lbs)

OPTIONAL ACCESSORIES



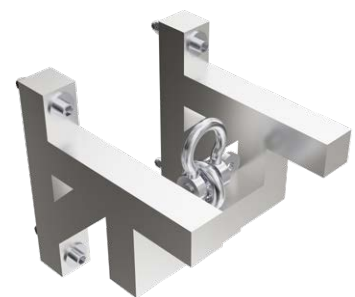
T1T-BF

Ballast frame, 2000 kg (4,409 lbs)
1220 x 1505.5 x 105 mm
(48.03 x 59.25 x 4.13 in)
31.04 kg (68.43 lbs)



T1T-SO

Short outrigger
405 x 340 x 110 mm
(15.94 x 13.39 x 4.33 in)
3.97 kg (8.74 lbs)



T1T-MH-SB

Motor holder on sleeve block
289 x 290 x 300 mm
(11.38 x 11.42 x 11.81 in)
5.65 kg (12.48 lbs)